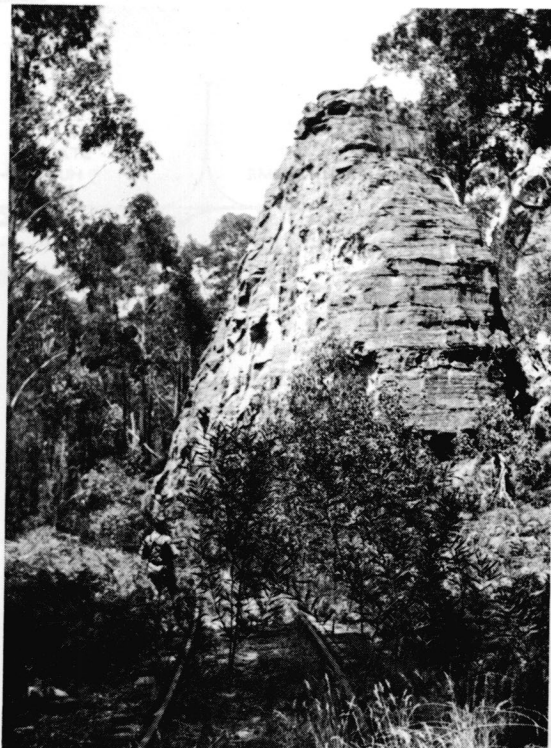


sandstone turrets and pinnacles, fashioned by centuries of rain and wind into all manner of fantastic shapes, intersected by numerous ravines clothed with a somewhat sterile scrub intermingled with spindly eucalypti seeking a sparse sustenance from a stony terrain seemingly devoid of soil. Reaching the base of the eastern cliff alignment, a rugged vertical mass of multi-coloured sandstone, fretted and honey-combed into intricate designs, the line passed through a natural cutting where, in ages long past a fissure developed across the width of a protruding spur, thus allowing the outer portion of the spur to slide bodily forward some twenty feet or so into the valley, leaving a cleft that was greatly appreciated in later days by civil engineers.

Nearby the head of a gully was crossed by the constantly curving track, followed by sidling after sidling cut into the steep talus slopes amidst a dense forest of tall slender gum-trees. One cutting in this precipitous area had a wall on one side eight feet high, the opposite wall towering to perhaps three hundred feet, its excavation must



*Typical rock turret along the Wolgan Valley Railway (22½ miles).
E.M. Stephens.*



*Northern portal of No. 1 tunnel on the abandoned Wolgan Valley Railway.
D. O'Brien.*

have proved a trial to the workmen. The Chief Engineer has mentioned that the earthworks were very heavy and the construction extremely troublesome, especially where the railway traversed the base of the cliffs and where men had to be supported from above by ropes, in order that the necessary action of jumping holes and using bars to lever out loose rocks might be effected.

Beyond lay a lengthy straight but down-graded section following the base of the cliffs to reach a curved cutting about one hundred feet in depth, excavated through another out-jutting spur, the highest crest of which was naturally decorated with a number of turreted pinnacles which are such a feature of these uplands. A wide radius curve then crossed a high embankment built over a broad depression to enter a side cutting which placed the line about half-way in its descent to the upper section of the Penrose Creek Gorge.

Cuttings and embankments followed in alternate succession, some of the latter fills having a height of sixty feet as they crossed side gullies, each with its trickling creek and dense forest, the home-ground of shy Wonga-Wonga Pigeons and inquisitive wallabies. Near the lower end of the "Horse-shoe"