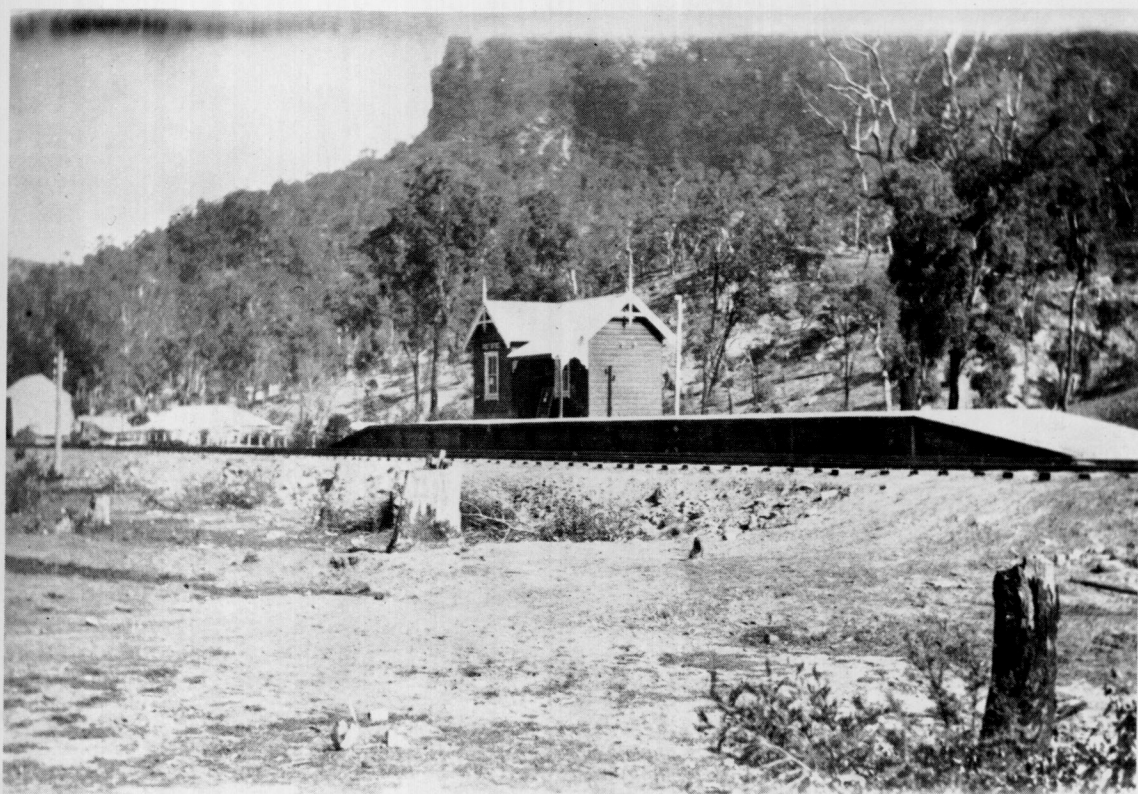


winding engine unit, being located on the hill-side immediately above the oil-works and at the base of the towering cliffs at the south-eastern side of the Wolgan Valley. An analysis of the coal proved that it was particularly suitable for the manufacture of metalurgical coke, a commodity then in great demand and in short supply. Work commenced immediately on the installation of four ovens on

an experimental basis. Then followed the large scale installation of one hundred and twenty ovens, built to the "Bee-hive" design, arranged back to back in two rows of sixty. The thousands of bricks required for this enterprise were supplied from a clay-pit and associated brick kilns established on the northern bank of the Wolgan River opposite to the oil-works. It should be noted that



Newnes railway station, circa 1910.

E.M. Stephens colln.