



This walk is more about history than the bush, but it still gives great views. The walk explores a small section of the old Lapstone Zig Zag railway (not to be confused with the more famous Lithgow Zig Zag railway). You will walk where the tracks once stood, through sandstone cuttings, passing an old train station, to the famous Knapsack Viaduct (bridge).

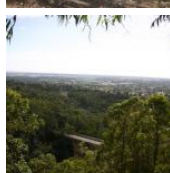
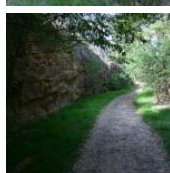
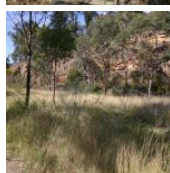
Blue Mountains National Park

Length: 2 km
Time: 1 Hr
Climb: 104 m
Style: Circuit
Rating: Track: Hard
Where: 5.8 km WSW of Penrith
Transport: bus car



Visit www.wildwalks.com for more info

Side trips and Alternate routes mentioned in these notes are not included in the tracks overall rating, distance or time estimate. The notes only describe the side trips and Alternate routes in one direction. Allow extra time for resting and exploring areas of interest. Please ensure you and your group are well prepared and equipped for all possible hazards and delays. The authors, staff and owners of wildwalks take care in preparing these notes but will not accept responsibility for any inconvenience, loss or injury sustained by using these notes or maps. Please take care and share your experience through the website. GPS for start and end of this walk: -33.7668,150.6406



Paddy Pallin - Will your feet be happy? www.paddypallin.com.au

Will your feet be happy?

Come into Paddy Pallin for an expert boot fitting and we'll use 80 years of bushwalking experience to help you make the most of your experience.

Mention this ad and get a free Paddy Pallin club membership entitling you to 10% off plus other exclusive benefits.



Car park to steps 0.2km 5 mins

(From S) From the Lapstone water reservoir car park, this walk heads towards the motorway (north), following the foot path on the left (western) side of the road. The walk continues down the hill and under the bridge. At the end of the cutting after the bridge, the walk comes to the base of a set of stairs.

Steps to Quarry 0km 1 mins

(From 0.22 km) Turn left: From here, the walk heads up the steps to the clearing at the top. This clearing is an old quarry and section of the original rail line. There is a bit of a 'rabbit warren' of tracks in this area.

Quarry to Intersection of cuttings 0.4km 5 mins

(From 0.24 km) Turn right: From the quarry, the track heads north, initially across the gully then into the old railway cutting. The track then follow this old train line through several cuttings and, before long, comes across a junction of these cuttings. (The other track (not used by this walk, heads south, passing a few hundred meters west of the quarry.)

Intersection of cuttings to Siding 0.2km 5 mins

(From 0.6 km) Veer right: The track continues north through a few more cuttings, and past an old platform. Soon after this, then the track comes onto the siding (a section of railway track used for storing trains) and at the end of the siding is an old lookout, giving views down the gully to Knapsack Bridge.

Siding to Knapsack Bridge 0.3km 10 mins

(From 0.84 km) Turn sharp right: The walk follows the the track from the lookout down the ridge, initially turning south to come back parallel with the rail line until coming to a small track intersection. From here, the walk follows the track and stairs, winding down the hill. The track comes to the south-western corner of the bridge. After exploring the bridge footings, the track follows the defined path up to the southern end of the bridge.

Knapsack Bridge to Western Motorway Footpath 0.1km 3 mins

(From 1.14 km) Turn right: From Knapsack Bridge, the walk heads south along the old road, which soon comes to a locked gate. The walk continues around the gate and soon meets an intersection with a footpath, which heads south along the Great Western Highway.

Western Motorway Footpath to Steps 0.5km 10 mins

(From 1.29 km) Turn right: This walk heads south along the footpath - it is far from a wilderness experience, walking along the highway, but serves as the most direct return route. The walk comes to the steps, next to the on-ramp.

steps to Car park 0.2km 5 mins

(From 1.75 km) Continue straight: From the base of the steps (which lead to the old quarry), this walk heads south along the footpath that follows the on-ramp as it turns and goes under the bridge. Soon after the bridge, the walk stays left to stick to the track that brings you to the Lapstone water reservoir car park.

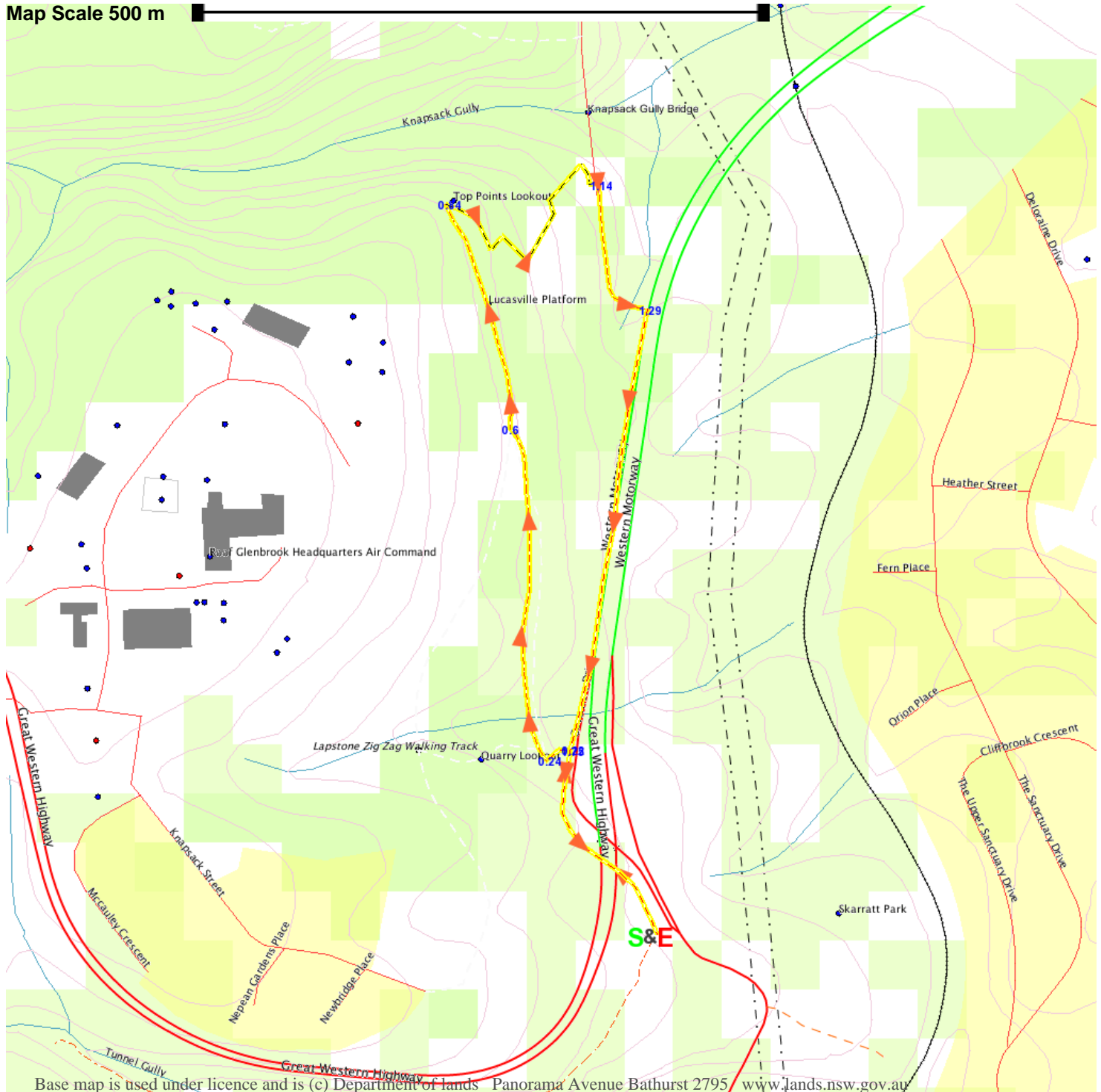
AN EXTRA 1/2 SIZE

THE DIFFERENCE BETWEEN
A GOOD EXPERIENCE
AND A BAD ONE

EXPERIENCE
IS EVERYTHING

Passey Passer
SINCE 1950

Map Scale 500 m



Base map is used under licence and is (c) Department of lands Panorama Avenue Bathurst 2795 www.lands.nsw.gov.au

