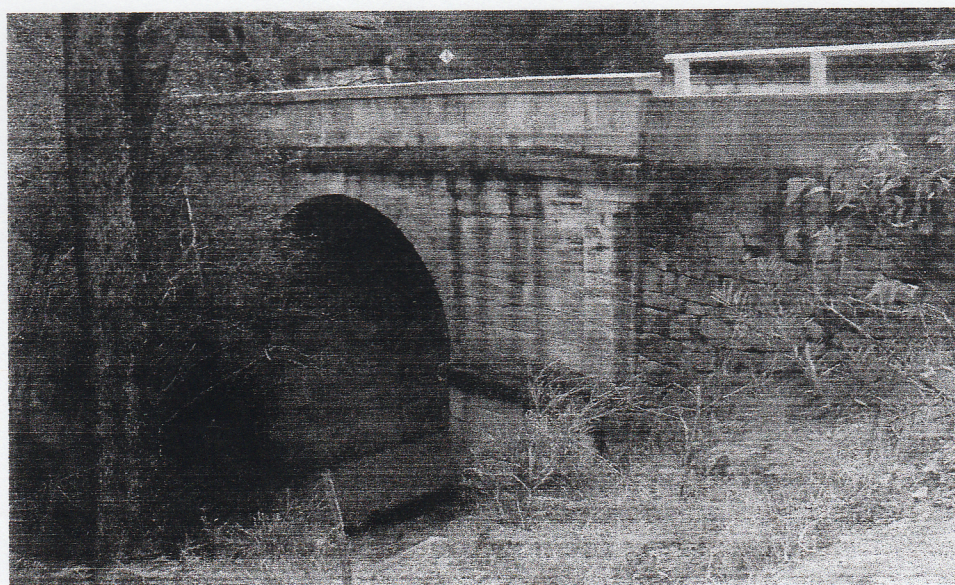


Other financial disasters followed until, in 1897, Patrick went chasing gold again, this time in Western Australia, but this was no more successful than the Bathurst venture and, like his father, he ended up in farming.

So it was that the family did not see the Lower Blue Mountains until I moved into Mitchells Pass in 1961.



Road and Culvert along Mitchells Pass Road



Lennox Bridge